



StarFish

seabed imaging system

FEATURES:

- THE SMALLEST SIDE SCAN TOWFISH ON THE MARKET
- PIONEERING, INNOVATIVE DESIGN
- EASILY TRANSPORTABLE - FITS IN A RUCKSACK
- PLUG & PLAY USB INTERFACE TO ANY PC
- EASILY POWERED FROM ALMOST ANY SOURCE
- SIMPLE INTUITIVE SOFTWARE

APPLICATIONS:

- DIVE CLUBS
- LAW ENFORCEMENT / HOMELAND SECURITY
- SHIPWRECK HUNTING / TREASURE HUNTING
- UNDERWATER RESEARCH / ACADEMIC INSTITUTES
- FISHERIES / ANGLING / SPORT FISHING
- OFFSHORE OIL & GAS INDUSTRY

StarFish is a revolutionary, high definition, side scan sonar which produces near photo-quality images of the seabed. Built to a unique, innovative design StarFish is currently the smallest side scan towfish on the market.

Since the first seabed imaging sonars were developed, manufacturers have predominantly focused on a cylindrical or torpedo-shaped towfish body. Research into underwater aerodynamics has shown that the torpedo-shape many associate with side scan sonars may not be the optimum design.

Today we have created a revolutionary, new tow body challenging these old concepts and providing several advantages. The compact design and unique shape dramatically improve the stability of the sonar and with it the quality of the seabed images.

The near photo-quality images produced by StarFish make it an affordable, low-cost side scan sonar compared to many larger commercial side scan systems. The advanced digital CHIRP



acoustic techniques used by StarFish offer better range resolution compared to conventional fixed-frequency side scan sonars.

StarFish is truly 'Plug and Play' connecting to your PC or laptop via a USB Port. It out performs many larger commercial systems, yet the intuitive software makes it very easy to use.

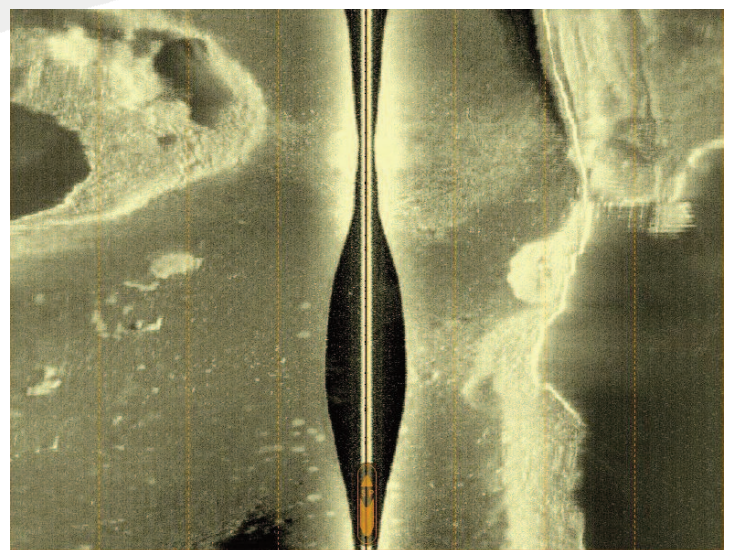


Image of the seabed produced by StarFish

the seabed is your playground

www.starfishsonar.com

System

System Parts	Sonar	Starfish 450F Sonar Head (BP00018) Starfish 450 Top-Box (BP00019)
	Power Supplies	Universal AC mains to DC power-supply 2m cigar plug and lead Crocodile-clip to cigar socket adapter.
	Software	Starfish Interface Software (BP00046)
	Documentation	User manual
Legislative Compliance	RoHS WEEE EMC	Full compliance to the 2002/95/EC RoHS directive. Full EN50419 compliance TBA

Sonar Head

Dimensions	Length Width Height	380mm 110mm 100mm
Weight	Air Water	Approx 1.80Kg Approx 0.80Kg
Towing cable	Length Breaking Strain Construction	15m >150Kg (Kevlar reinforced) Black polyurethane jacketed, with internal Kevlar reinforcing member
Construction		Reinforced black polyurethane rubber
Transducers	Arrangement Vertical beam-width Horizontal beam-width Operating frequency Transmit Source Power Level	Dual fin mounted transducers, with 30° down angle from horizontal. 60° nominal (@ -3dB point) 1.7° nominal (@ -3dB point) 450KHz nominal. TBA

E-MAIL: info@starfishsonar.com
PHONE: + 44 (0)1224 744111
FAX: + 44 (0)1224 741771

POST: StarFish Seabed Imaging System
Tritech International Limited
Peregrine Road Westhill
Aberdeen AB32 6JL United Kingdom

 blueprint design
engineering ltd.

 **Tritech**
International
Limited